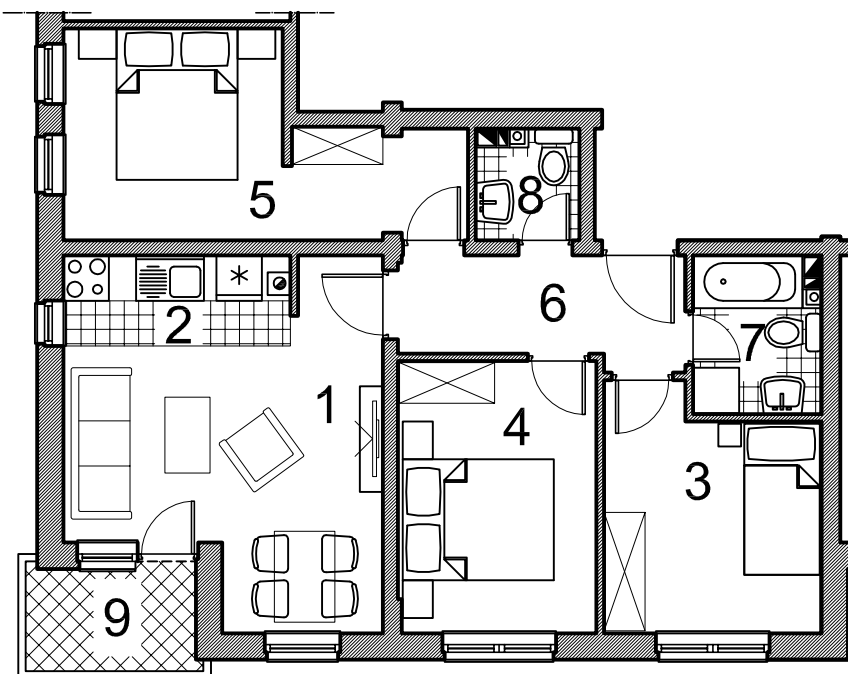


STAMBENO-POSLOVNI OBJEKAT U PALAMA - TRG 3

STAN 2A

I sprat

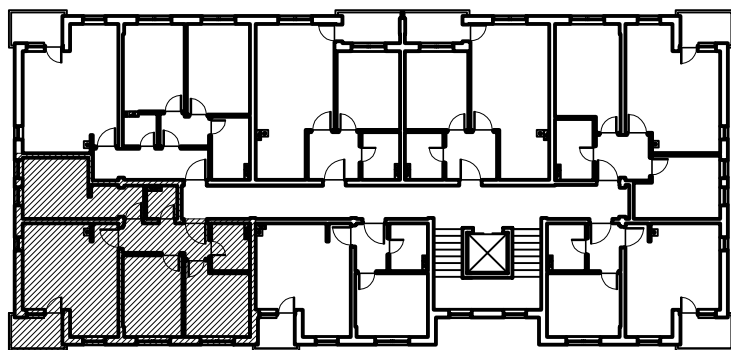
58,25 m²



OPIS I POVRŠINE PROSTORIJA

1. DNEVNA SOBA/TRPEZARIJA	parket	14,46 m ²
2. KUHINJA	ker. pločice	3,40 m ²
3. SPAVAĆA SOBA	parket	8,38 m ²
4. SPAVAĆA SOBA	parket	9,15 m ²
5. SPAVAĆA SOBA	parket	11,02 m ²
6. HODNIK	ker. pločice	5,05 m ²
7. KUPATILO/TOALET	ker. pločice	3,30 m ²
8. TOALET	ker. pločice	1,79 m ²
9. TERASA (0,50 koeficijent)	granitna ker.	1,70 m ²

UKUPNO..... 58,25 m²



STANIŠIĆ d.o.o. Pale,
telefon: +387 (57) 22 49 63
www.stanistic-pale.com.