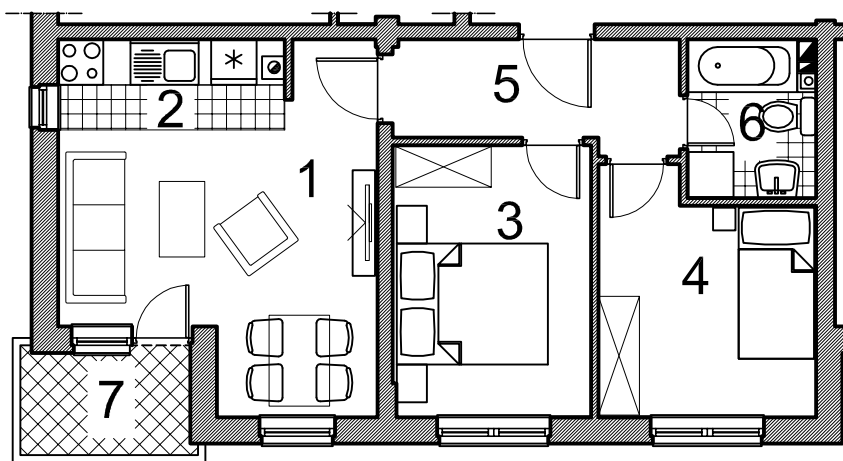


STAMBENO-POSLOVNI OBJEKAT U PALAMA - TRG 3

# STAN 2

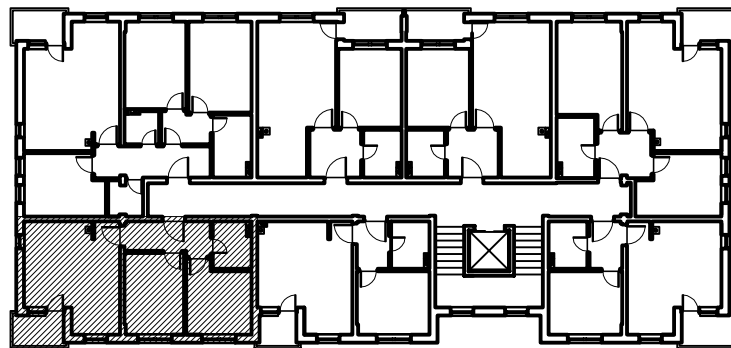
II - V sprat  
**45,42 m<sup>2</sup>**



### OPIS I POVRŠINE PROSTORIJA

1. DNEVNA SOBA/TRPEZARIJA	parket	14,47 m <sup>2</sup>
2. KUHINJA	ker. pločice	3,40 m <sup>2</sup>
3. SPAVAĆA SOBA	parket	9,14 m <sup>2</sup>
4. SPAVAĆA SOBA	parket	8,38 m <sup>2</sup>
5. HODNIK	ker. pločice	5,04 m <sup>2</sup>
6. KUPATILO/TOALET	ker. pločice	3,29 m <sup>2</sup>
7. TERASA (0,50 koeficijent)	granitna ker.	1,70 m <sup>2</sup>

UKUPNO..... 45,42 m<sup>2</sup>



**STANIŠIĆ d.o.o. Pale,**  
telefon: +387 (57) 22 49 63  
www.stanistic-pale.com.