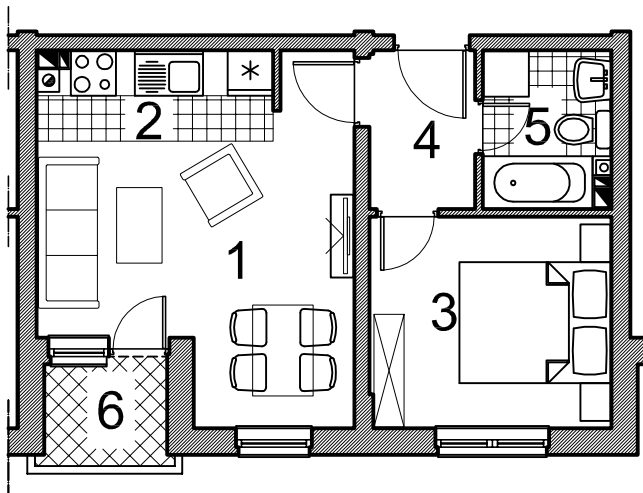


STAMBENO-POSLOVNI OBJEKAT U PALAMA - TRG 3

STAN 1

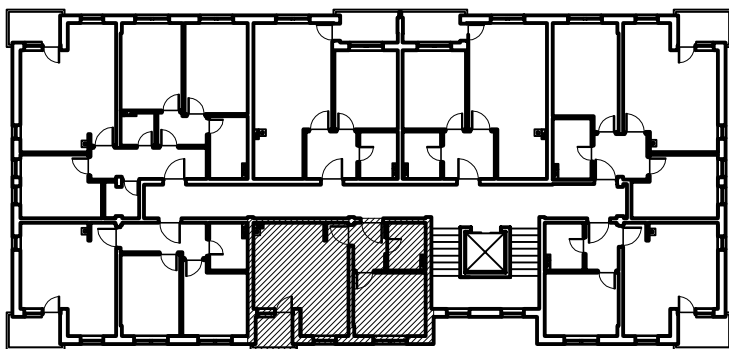
I - V sprat
34,29 m²



OPIS I POVRŠINE PROSTORIJA

1. DNEVNA SOBA/TRPEZARIJA	parket	14,24 m ²
2. KUHINJA	ker. pločice	3,44 m ²
3. SPAVAĆA SOBA	parket	8,67 m ²
4. HODNIK	ker. pločice	2,85 m ²
5. KUPATILO/TOALET	ker. pločice	3,30 m ²
6. TERASA (0,75 koeficijent)	granitna ker.	1,79 m ²

UKUPNO..... 34,29 m²



STANIŠIĆ d.o.o. Pale,
telefon: +387 (57) 22 49 63
www.stanistic-pale.com.