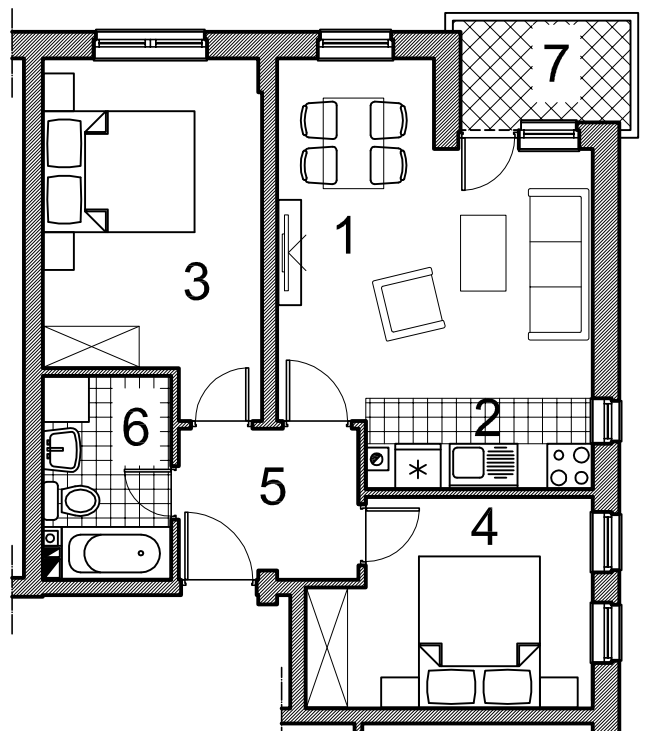


STAMBENO-POSLOVNI OBJEKAT U PALAMA - TRG 3



STAN 6

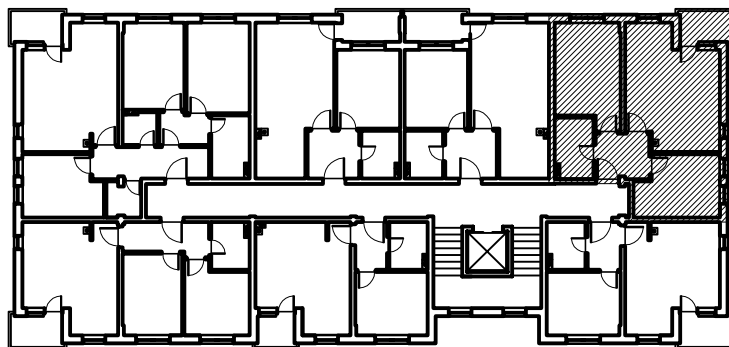
I - V sprat

51,74 m²

OPIS I POVRŠINE PROSTORIJA

1. DNEVNA SOBA/TRPEZARIJA	parket	16,12 m ²
2. KUHINJA	ker. pločice	3,40 m ²
3. SPAVAĆA SOBA	parket	12,26 m ²
4. SPAVAĆA SOBA	parket	9,39 m ²
5. HODNIK	ker. pločice	4,58 m ²
6. KUPATILO/TOALET	ker. pločice	4,29 m ²
7. TERASA (0,50 koeficijent)	granitna ker.	1,70 m ²

UKUPNO..... 51,74 m²



STANIŠIĆ d.o.o. Pale,
telefon: +387 (57) 22 49 63
www.stanistic-pale.com.