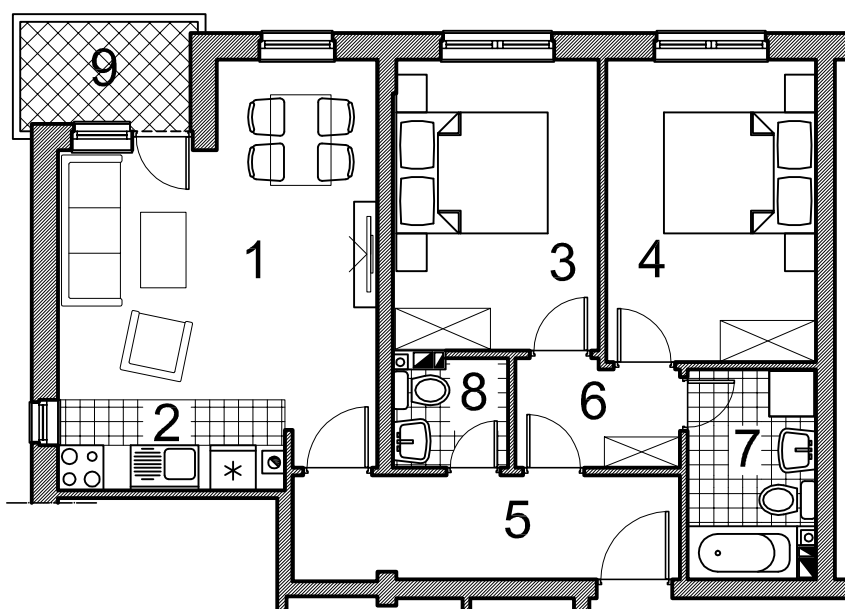


STAMBENO-POSLOVNI OBJEKAT U PALAMA - TRG 3

STAN 3A

I sprat

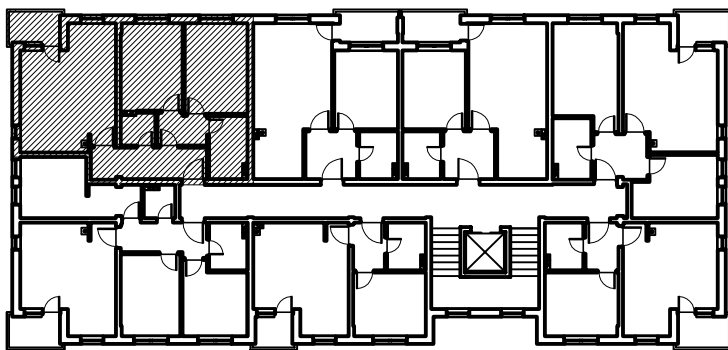
59,24 m²



OPIS I POVRŠINE PROSTORIJA

1. DNEVNA SOBA/TRPEZARIJA	parket	17,02 m ²
2. KUHINJA	ker. pločice	3,40 m ²
3. SPAVAĆA SOBA	parket	10,15 m ²
4. SPAVAĆA SOBA	parket	10,77 m ²
5. HODNIK	ker. pločice	6,84 m ²
6. HODNIK	ker. pločice	2,90 m ²
7. KUPATILO/TOALET	ker. pločice	4,41 m ²
8. TOALET	ker. pločice	2,05 m ²
9. TERASA (0,50 koeficijent)	granitna ker.	1,70 m ²

UKUPNO..... 59,24 m²



STANIŠIĆ d.o.o. Pale,

telefon: +387 (57) 22 49 63

www.stanistic-pale.com.