

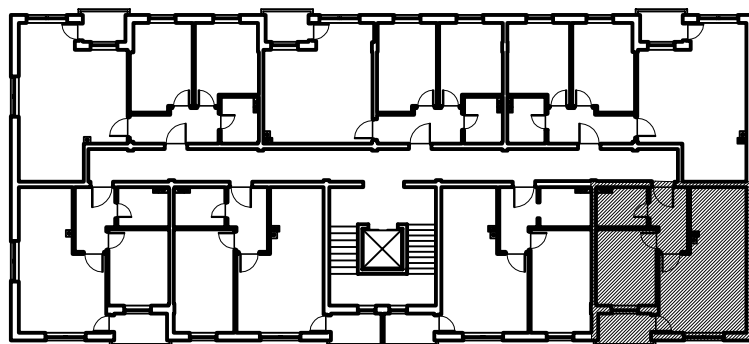
# STAN 6

## 39,66 m<sup>2</sup>

### OPIS I POVRŠINE PROSTORIJA

1. DNEVNA SOBA/TRPEZARIJA	parket	14,37 m <sup>2</sup>
2. KUHINJA	ker. pločice	4,70 m <sup>2</sup>
3. SPAVAĆA SOBA	parket	8,90 m <sup>2</sup>
4. HODNIK	ker. pločice	4,31 m <sup>2</sup>
5. KUPATILO/TOALET	ker. pločice	3,78 m <sup>2</sup>
6. TERASA (0,75 koeficijent)	granitna ker.	2,40 m <sup>2</sup>

UKUPNO..... 39,66 m<sup>2</sup>



HILANDARSKA ul.



STANIŠIĆ d.o.o. Pale,  
telefon: +387 (57) 22 49 63  
www.stanistic-pale.com.